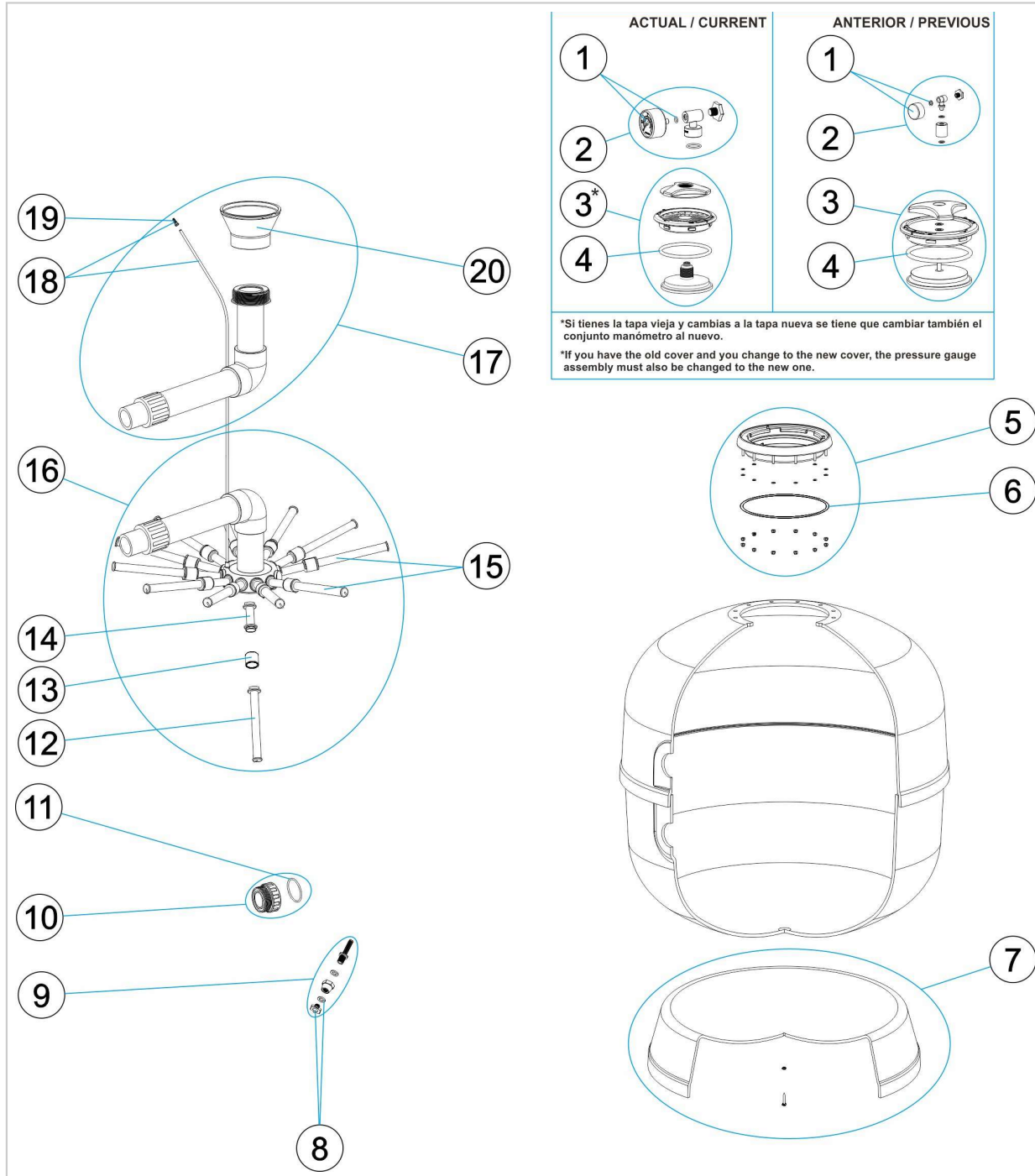


# FLUIDRA

## 00501 - ASTER FILTERS D. 900

Revision no.: 9 | Date: 15-09-2023



 Piezas del despiece (kits o unitarios)

POS.	CÓDIGO	DESCRIPCIÓN
1	4404010103	GAUGE 1/8" 3 BAR
2	4404020041	PRESSURE GAUGE UNIT 1/8' FOR CURRENT MODEL
2	4404190101	PRESSURE GAUGE UNIT 1/8' FOR OLD MODEL
3	4404020040	QUICK CLOSING LID UNIT FOR CURRENT MODEL
3	4404020102	QUICK CLOSING LID UNIT FOR OLD MODEL DISCONTINUED
4	4404020111	LID GASKET
5	4404020108	LID RING UNIT
6	4404020116	O' RING 255X4
7	4404010093	FILTER BASE D. 950
8	4404040113	DRAIN PLUG AND GASKET
9	4404010108	WATER PURGE 3/8"
10	4404290108	OUTLET UNION 2 1/2" + O-RIN "
11	4404040211	O' RING D. 70X5
12	4404300916	COLLECTOR ARM 1" 225MM 6 UT - FOR COLLECTOR ARM WITH EXTENSIONS
12	4404290109	COLLECTOR ARM 1" 265MM 6 UT - FOR SINGLE COLLECTOR ARM
13	4404260418	UNION 1" 3 UT - FOR COLLECTOR ARM WITH EXTENSIONS
14	4404260419	MANIFOLD ARM 1" 100 M " 3 UT - FOR COLLECTOR ARM WITH EXTENSIONS
15	4404010048	MANIFOLD ARM ASSEMBLY 1" 265mm FOR SINGLE COLLECTOR ARM
15	4404260401	MANIFOLD ARM ASSEMBLY D. 950-1050 FOR COLLECTOR ARM WITH EXTENSIONS

<b>POS.</b>	<b>CÓDIGO</b>	<b>DESCRIPCIÓN</b>
16	4404010128	MANIFOLD ASSEMBLY D. 900 - 2 1/2" FOR < 2008
16	4404010126	MANIFOLD ASSEMBLY D. 900 - 2 1/2" (2008 " FOR > 2008
16	4404040127	MANIFOLD ASSEMBLY D. 900 MALE FOR > 2008
17	4404010127	DIFFUSER ASSEMBLY D. 900 2 1/2" FEMALE FOR < 2008
17	4404010124	DIFFUSER ASSEMBLY D. 900 2 1/2" MALE FOR > 2008
18	4404300707	RIGID PIPE L-845
19	4404040108	AIR PURGE
20	4404190324	DIFFUSER CONE D. 75

© 2024 Fluidra. All rights reserved. All trademarks and trade names used in this document are the property of their respective owners | [Privacy Policy](#) | [Disclaimer](#) | [Cookies](#) | [Quality management](#)